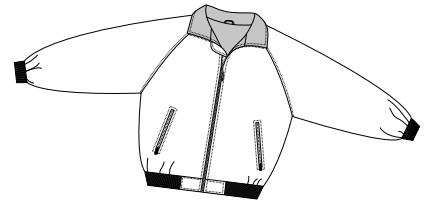
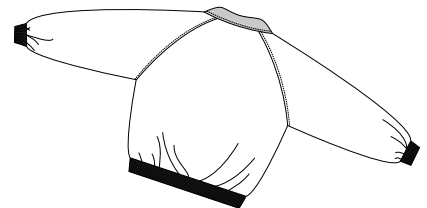


# Crew Jacket

PORT AUTHORITY®



Front



Back

## J755

- \* 100% Taslan nylon \* Fleece body lining \* Poly-filled nylon sleeves
- \* 1 x 1 nylon rib knit on waistband cuffs \* 2 zip-close pockets on front
- \* One interior zip close pocket

### Care Instructions:

Machine wash cold, gentle cycle. Tumble dry low. Do not bleach.

### Finished Measurements in Inches

Size	XS	S	M	L	XL	2XL	3XL	4XL
Length	26	26.5	27	27.5	28.5	29	30	30
Chest	22.5	24	25.5	27	28.5	30	31.5	33
Sleeve	33	34.5	36	36.5	38	38.5	39.5	39.5
Collar Ht	3.5	3.5	3.5	3.5	3.5	3.5	3.5	3.5
Hem	22.5	23.5	24.5	26	27	28.5	30	31.5
Areas for Decoration	Left/Right Chest, Full Back		Port Pocket™			NA		

Collar measured from center back seam to top hem. Chest width measured 1" below arm hole.  
Body length measured from back neck seam to hem. Sleeve length measured from center back seam to hem.

### Colors

	Black/Black
	Black/Grey Heather
	Dark Navy/Grey Heather
	Hunter/Grey Heather
	Royal/Dark Navy

### Please Note:

Colors shown are approximate and for reference only. For closest match see PMS colors, or for exact match, returnable samples and grommited samples are available.

### Color Chart

Jacket Colors	Black	Dark Navy	Hunter	Royal
Textile PMS	19-4005TC	19-4010TC	19-5212TC	19-3952TC
General PMS	426C	532C	5467C	661C
Trim Colors	Black	Grey Heather	Dark Navy	
Textile PMS				
General PMS				